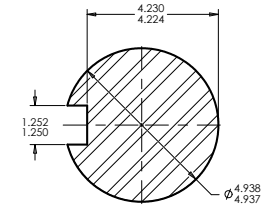
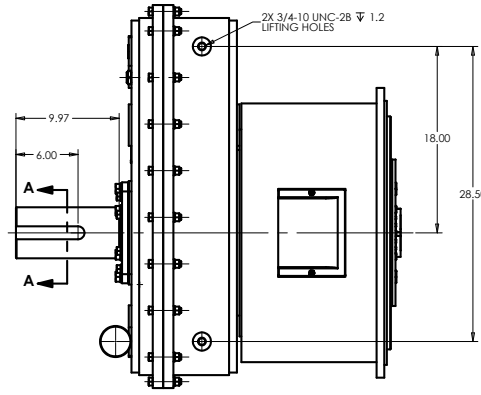
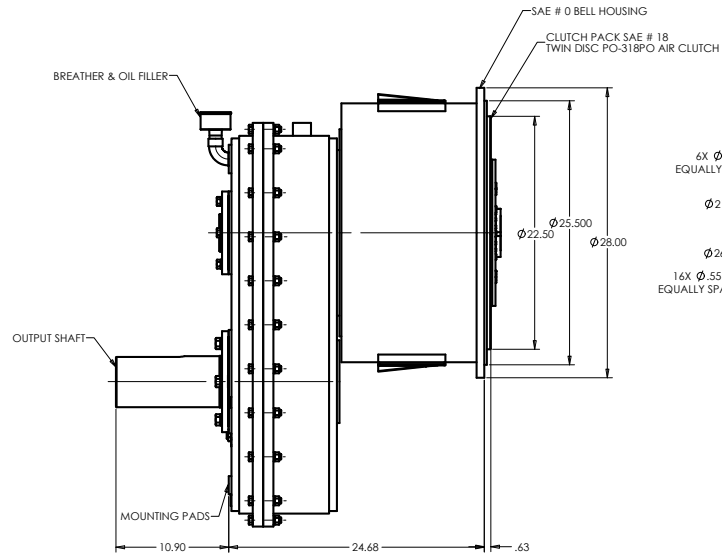
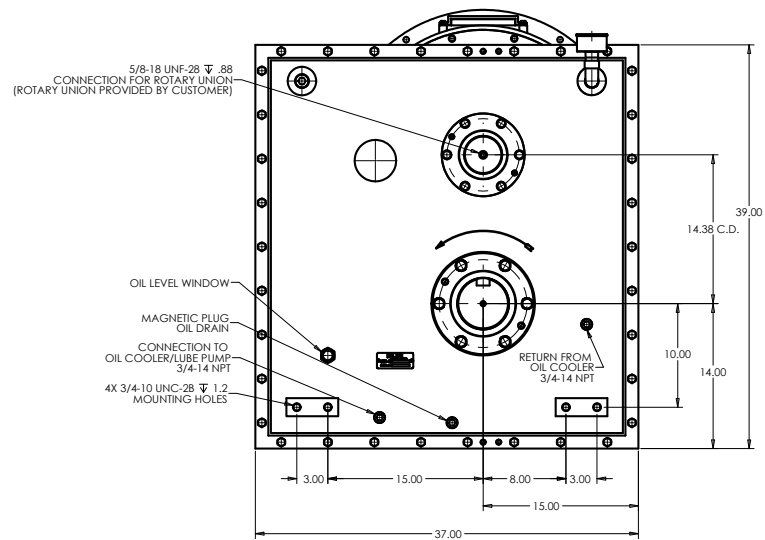


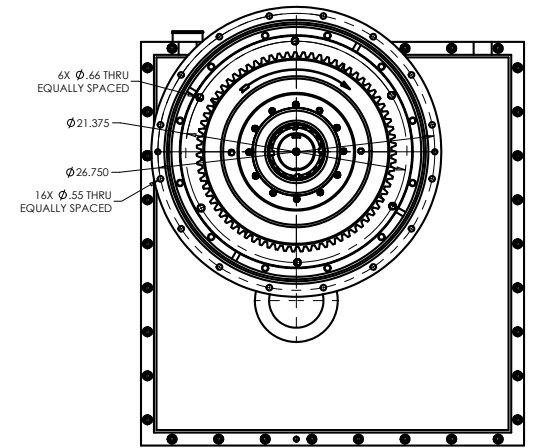
ALLOWED WORKING POSITIONS
(GEARBOX CAN BE OPERATED WITH
OUTPUT SHAFT TILTED AS SHOWN)



**SECTION A-A
(ENLARGED)**



WORKING POSITION



GEARBOX DATA:

- INPUT CAPACITY: **675 HP @ 1800 RPM**
- INPUT SPEED: **1800 RPM.**
- RATIO: **3.00:1**
- ROTATION: **ENGINE**
- LUBRICATION TYPE: **COOLED CIRCULATING OIL.**
- LUBE CAPACITY: **8 GALLONS APPR.**
- APPR WEIGHT: **1810 LBS W/O OIL.**

		RJ Link International, Inc. Rockford, IL 61109, USA		THIRD ANGLE PROJECTION
This document is the property of RJ Link International, Inc. and is loaned to the recipient for their confidential use only. In consideration of the loan of this drawing, recipient promises and agrees that it shall not be used in any way detrimental to the interest of RJ Link International, Inc. That it shall be returned upon request, and it shall not be reproduced, copied, loaned or otherwise disposed of directly or indirectly without the expressed written consent of RJ Link International, Inc.				
RESPONSIBILITY OF THE EQUIPMENT MANUFACTURER OR ASSEMBLER TO INSURE THAT NO DAMAGING CRITICALS FALL IN THE OPERATING RANGE OF THE SYSTEM.			DESCRIPTION REDUCTION GEARBOX	
DRAWING NO. D	DRAWING REL. D204E300001	SCALE 1:5	PART FILE D204	SHEET 1 OF 1 03
CHECKED JO	DATE 9/13/2107	DESIGNED JO	DATE 9/13/2107	APPROVED JO