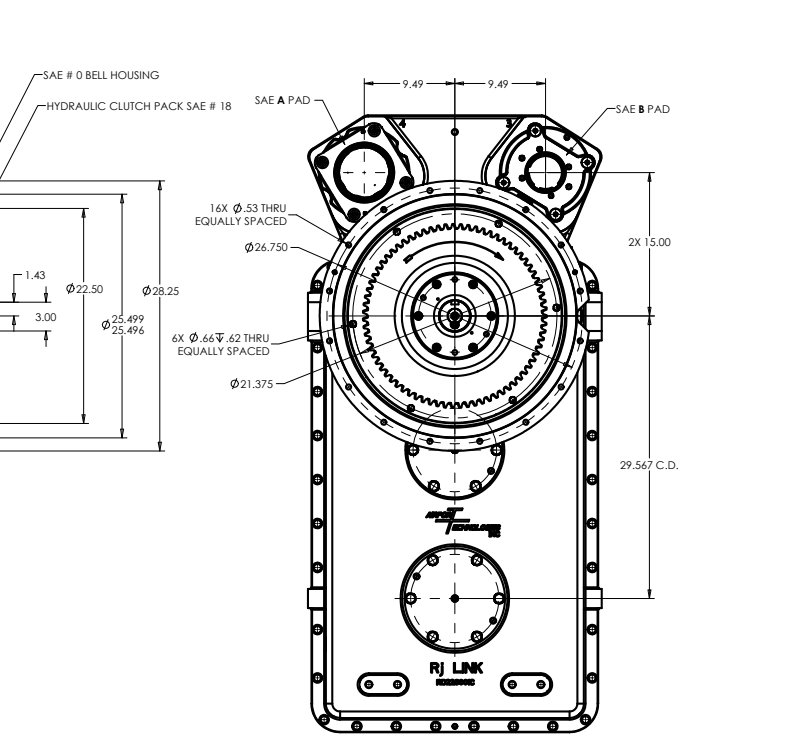
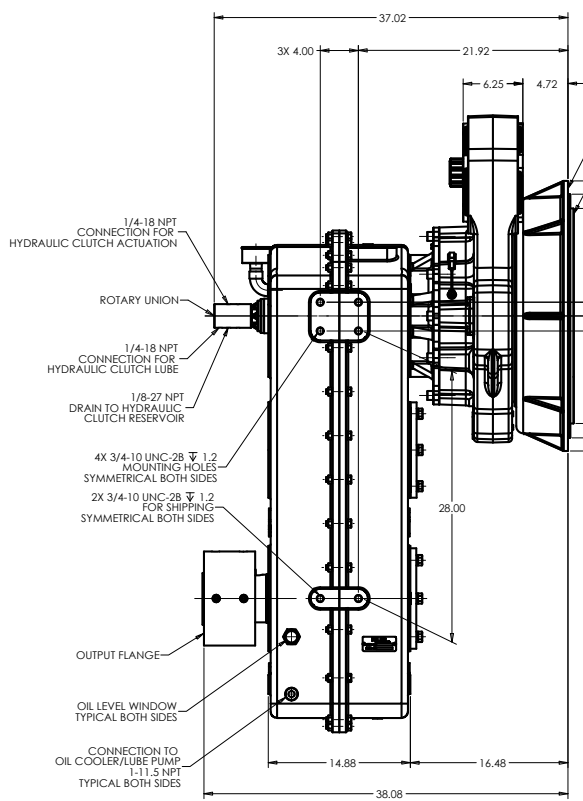
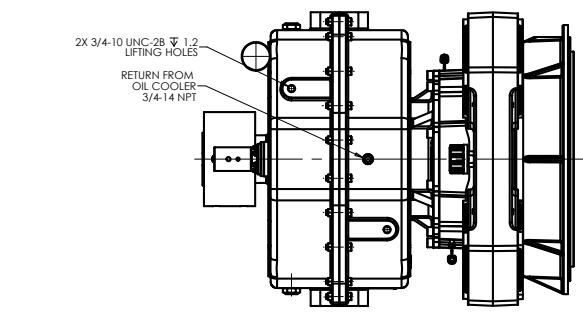
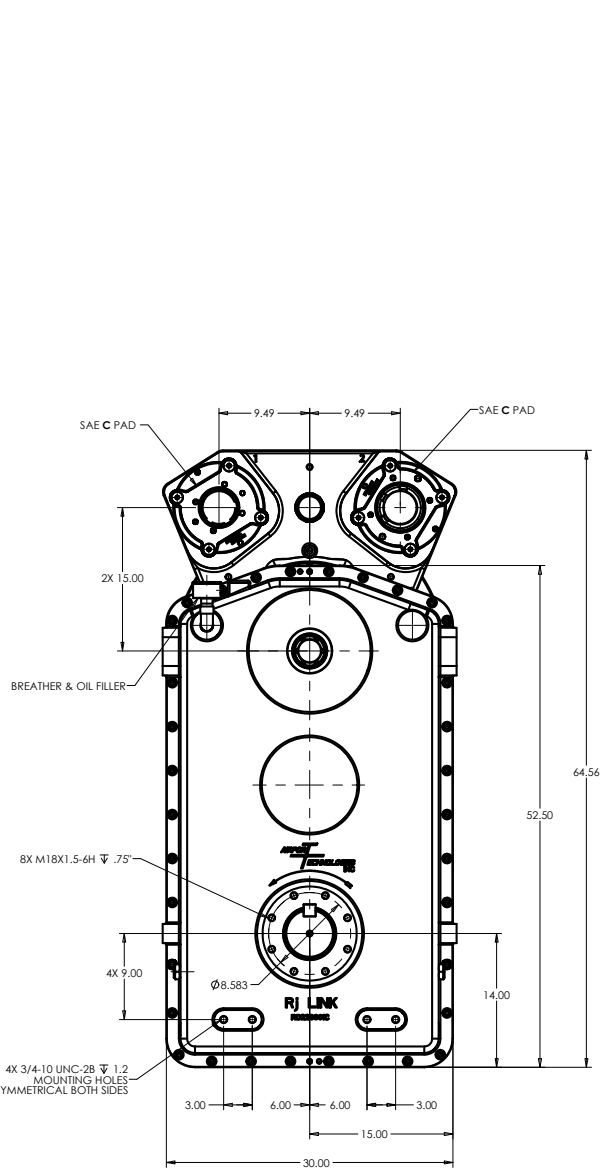


8 7 6 5 4 3 2 1



GEARBOX DATA:
 -INPUT CAPACITY: 1050 HP @ 1300 RPM
 -INPUT SPEED: 1300 RPM.
 -RATIO: 7.14:1
 -ROTATION: ENGINE
 -LUBRICATION TYPE: COOLED CIRCULATING OIL.
 -LUBE CAPACITY: 9.5 GALLONS APPR.
 -APPR WEIGHT: 2110 lbs W/O OIL.

		RJ Link International, Inc. Rockford, IL 61109, USA		THIRD ANGLE PROJECTION	
This document is the property of RJ Link International, Inc. and is loaned to the recipient for their confidential use only. In consideration of the loan of this drawing, recipient promises and agrees that it shall not be used in any way detrimental to the interest of RJ Link International, Inc. That it shall be returned upon request, and it shall not be reproduced, copied, loaned or otherwise disposed of directly or indirectly without the expressed written consent of RJ Link International, Inc.					
TORSIONAL VIBRATIONS EXIST IN ALL ROTATING SYSTEMS. IT IS THE SOLE RESPONSIBILITY OF THE EQUIPMENT MANUFACTURER OR ASSEMBLER TO INSURE THAT NO DAMAGING CRITICALS FALL IN THE OPERATING RANGE OF THE SYSTEM.				DESCRIPTION REDUCTION GEARBOX	
REV	DATE	BY	APP	DESCRIPTION	
D	9/12/2017	MMM	MMM	D226E714002	
CHECKED	DATE	SCALE	PART		
JO	9/13/2017	1:8	D226		
ENG APP	DATE				
JO	9/13/2017				
				SHEET 1 OF 1	01

8 7 6 5 4 3 2 1