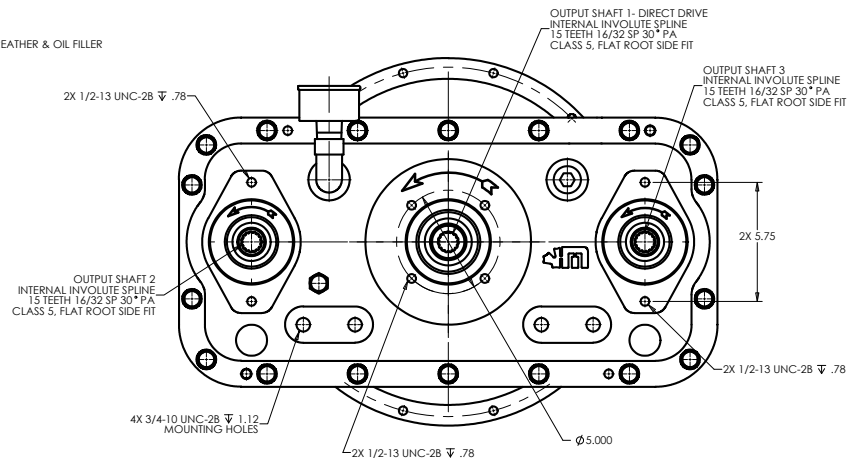
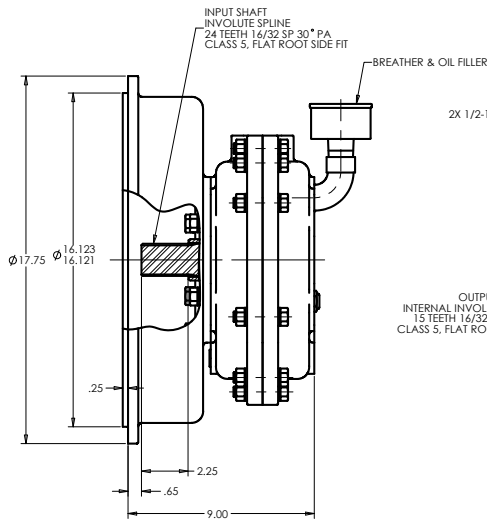


WORKING POSITION



**GEARBOX DATA:**

- INPUT CAPACITY: 125 HP.
- INPUT SPEED: 2100 RPM MAX.
- RATIO: 1.00:1.
- ROTATION: ENGINE
- LUBRICATION TYPE: BATH
- LUBE CAPACITY: 2 QTS APPR.
- APPR WEIGHT: 240 LBS W/O OIL.

		<b>RJ Link International, Inc.</b> Rockford, IL 61109, USA		THIRD ANGLE PROJECTION	
This document is the property of RJ Link International, Inc. and is loaned to the recipient for their confidential use only. In consideration of the loan of this drawing, recipient promises and agrees that it shall not be used in any way detrimental to the interest of RJ Link International, Inc. That it shall be returned upon request, and it shall not be reproduced, copied, loaned or otherwise disposed of directly or indirectly without the expressed written consent of RJ Link International, Inc.					
TORSIONAL VIBRATIONS EXIST IN ALL ROTATING SYSTEMS. IT IS THE SOLE RESPONSIBILITY OF THE EQUIPMENT MANUFACTURER OR ASSEMBLER TO INSURE THAT NO DAMAGING CRITICALS FALL IN THE OPERATING RANGE OF THE SYSTEM.					
DRAWING NO.		D		PART NO.	
DRAWING REV.		D		D207E100002	
CHECKED		DATE		SCALE	
JO		10/13/2017		1:2.5	
ENG APP		DATE		SHEET 1 OF 1	
JO		10/13/2017		02	