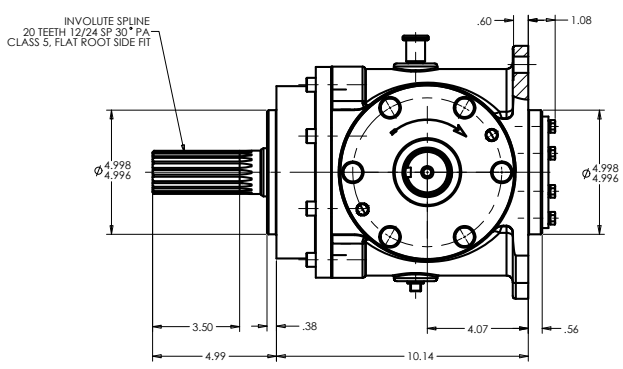
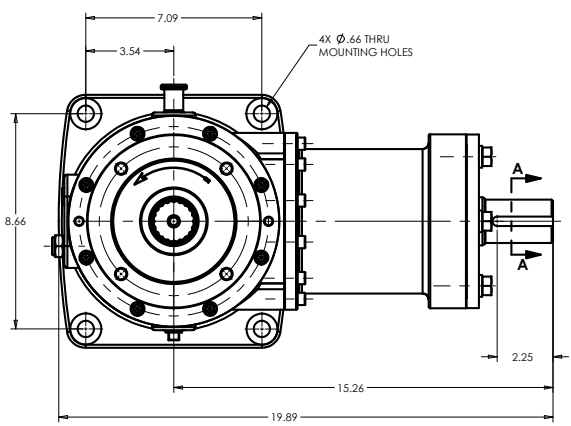
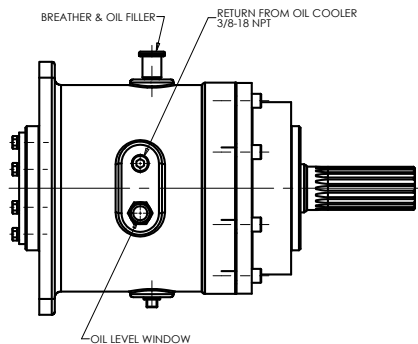
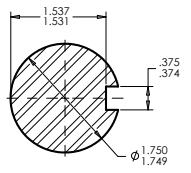


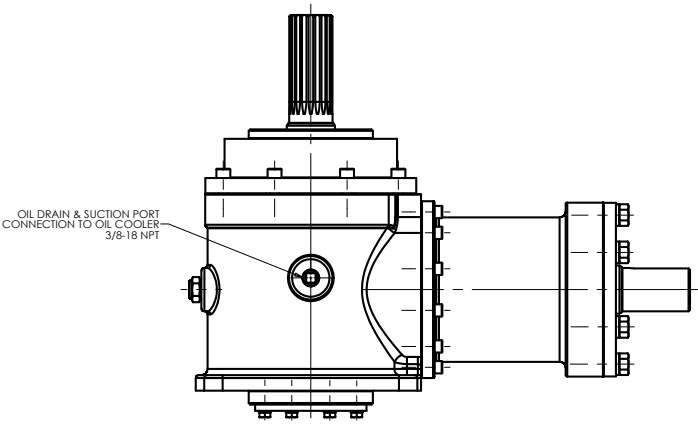
8 7 6 5 4 3 2 1



WORKING POSITION



SECTION A-A (ENLARGED)



- GEARBOX DATA:**
- INPUT: 200 HP
 - 1800 RPM
 - RATIO: 1.00:1
 - ROTATION: ANTI-ENGINE
 - LUBRICATION TYPE: COOLED CIRCULATING OIL; EXTERNAL COOLING SYSTEM; NOT PART OF THE GEARBOX.
 - SUMP CAPACITY: 9 QTS APPR.
 - SURFACE FINISH: PER CUSTOMER REQUEST.
 - APP. WEIGHT: 150 lbs W/O OIL.

RJ Link INTERNATIONAL, INC. **RJ Link International, Inc.**
Rockford, IL 61109, USA

This document is the property of RJ Link International, Inc. and is loaned to the recipient for their confidential use only. In consideration of the loan of this drawing, recipient promises and agrees that it shall not be used in any way detrimental to the interest of RJ Link International, Inc., that it shall be returned upon request, and it shall not be reproduced, copied, loaned or otherwise disposed of directly or indirectly without the expressed written consent of RJ Link International, Inc.

RIGHT ANGLE GEARBOX

DESIGNER	MMM	DATE	10/16/2017	SCALE	D	PART FILE	D224R100002	SHEET	1 OF 1
CHECKED	JO	DATE	10/17/2017	SCALE	12.5				00
ENGR APP	JO	DATE	10/17/2017						

8 7 6 5 4 3 2 1