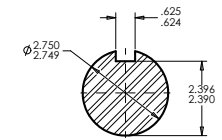
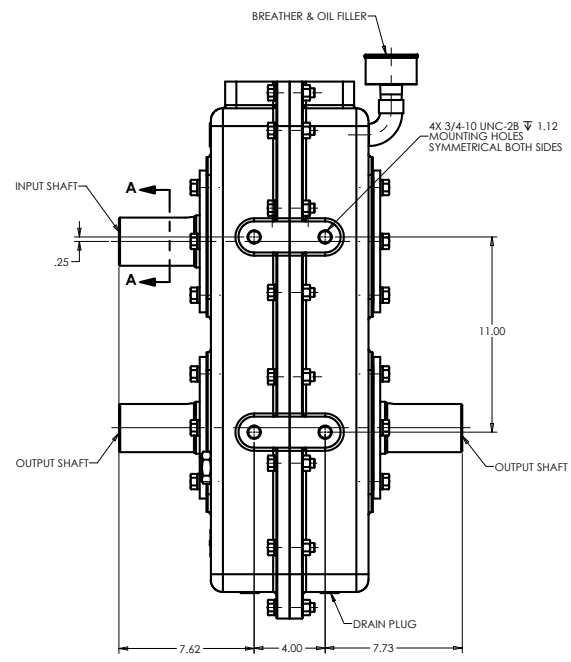


**WORKING POSITION**



**SECTION A-A**  
(ALL SHAFT ARE THE SAME SIZE)

- GEARBOX DATA:**
- INPUT CAPACITY: 1300 lb-ft.
  - INPUT SPEED: 144 RPM MAX.
  - RATIO: 1.00:1
  - ROTATION: ANTI-ENGINE
  - LUBRICATION TYPE: BATH
  - LUBE CAPACITY: 2.5 GALLONS APPR.
  - APPR WEIGHT: 515 lbs W/O OIL.

		<b>RJ Link International, Inc.</b> Rockford, IL 61109, USA		THIRD ANGLE PROJECTION 
<small>This document is the property of RJ Link International, Inc. and is loaned to the recipient for their confidential use only. In consideration of the loan of this drawing, recipient promises and agrees that it shall not be used in any way detrimental to the interest of RJ Link International, Inc., that it shall be returned upon request, and it shall not be reproduced, copied, loaned or otherwise disposed of directly or indirectly without the expressed written consent of RJ Link International, Inc.</small>				
<small>TORSIONAL VIBRATIONS EXIST IN ALL ROTATING SYSTEMS. IT IS THE SOLE RESPONSIBILITY OF THE EQUIPMENT MANUFACTURER OR ASSEMBLER TO INSURE THAT NO DAMAGING CRITICALS FALL IN THE OPERATING RANGE OF THE SYSTEM.</small>			DESCRIPTION <b>TRANSFER CASE</b>	
DRAWN MMM	DATE 10/10/2017	DWG SIZE D	DWG NO. D227A100001	SCALE 1:2.5
CHECKED JO	DATE 10/11/2017	PART FILE	SHEET 1 OF 1	REV 00
ENG APP JO	DATE 10/11/2017			